



Illusion Cord and Jewelry Elastic Cord

GRIFFIN Illusion Cord and GRIFFIN Jewelry Elastic Cord are fashionable beading materials. They are easy and exciting to work with and these threads are very durable.

The crystal-clear threads are perfect for necklaces and bracelets creations with seemingly "floating" pieces of jewelry (Illusion Cord) or for pieces which require great elasticity (Jewelry Elastic Cord).



Tips and Tricks from Doc Griffin – This is how you can add an invisible knot:

Illusion Cord and Jewelry Elastic Cord can be knotted at the ends. In order to let the knot disappear, in a pearl for example, a somewhat larger hole has to be drilled in one of the pearls. Alternatively, a hollow pearl can be used. Make three half-knots and pull them tight. It is important that you make these knots with cord under slight tension to prevent unwanted gaps between the pearls/stones.

You are welcome to visit Doc Griffin on our homepage www.griffin.de or send him an e-mail to drgriffin@griffin.de

Colours Illusion Cord

 transparent

Colours Elastic Cord

 transparent

 dark red

 blue


 lilac

 green

 black

Diameters Illusion Cord

 Ø 0.15 mm

 Ø 0.25 mm

 Ø 0.30 mm

 Ø 0.35 mm


 Ø 0.40 mm

 Ø 0.50 mm

 Ø 0.60 mm

Diameters Elastic Cord

 Ø 0.50 mm

 Ø 0.70 mm

 Ø 1.00 mm



www.griffin.de

**ILLUSION CORD/
JEWELRY ELASTIC CORD**

Illusion Cord

Illusion Cord is eminently suited for the creation of necklaces which incorporate seemingly "floating" pieces of jewelry. It is therefore a suitable addition to use in combination with glass pearls and transparent stones like rock crystal. This crystal-clear nylon thread is especially tear-proof and subtle and has been especially developed for the manufacture of jewelry.



GRIFFIN Illusion Cord is available in transparent and 4 diameters (0.15 mm, 0.25 mm, 0.30 mm, 0.35 mm, 0.40 mm, 0.50 mm and 0.60 mm).



Jewelry Elastic Cord

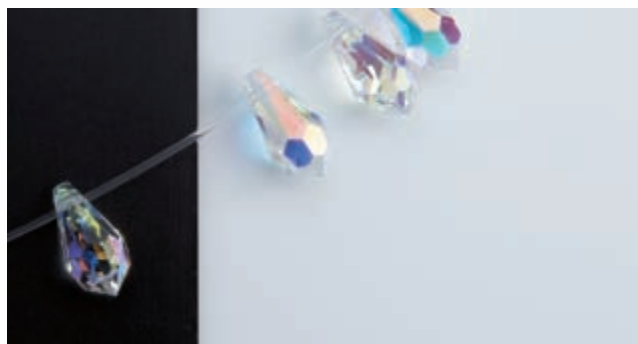
GRIFFIN Jewelry Elastic Cord is ideal to make elastic pieces of jewelry that can be slipped on such as bracelets, hair-bands and children's jewelry. Chains strung with Elastic Cord keep their permanent soft elasticity, can be stretched up to 200 times their initial length and are very durable.

GRIFFIN Stretch Magic can be knotted and is suitable for pearls and stones with a bead-hole diameter of more than 0.50 mm. Depending on the choice of design, a selection of transparent as well as coloured Elastic Cords are available.



Jewelry Elastic Cord

Pieces of jewelry using GRIFFIN Jewelry Elastic Cord will stretch like a rubber band when slipped on or off. The Elastic Cord will return to its original length.



Illusion Cord

We offer GRIFFIN Jewelry Elastic Cord in transparent in 3 diameters (0.50 mm, 0.70 mm and 1.00 mm) and in 5 colours in 2 diameters (0.50 mm and 1.00 mm).